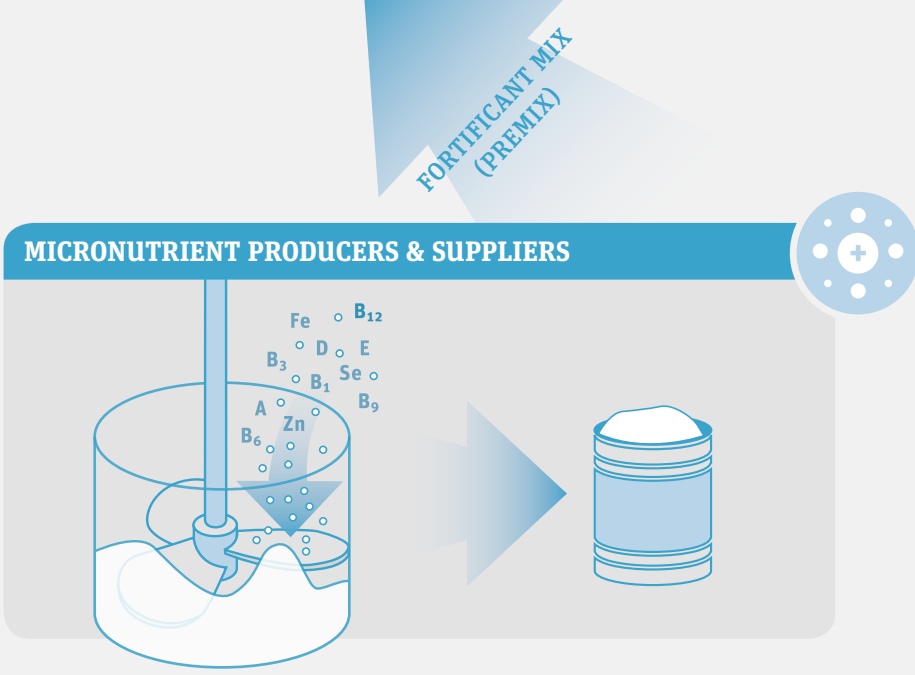
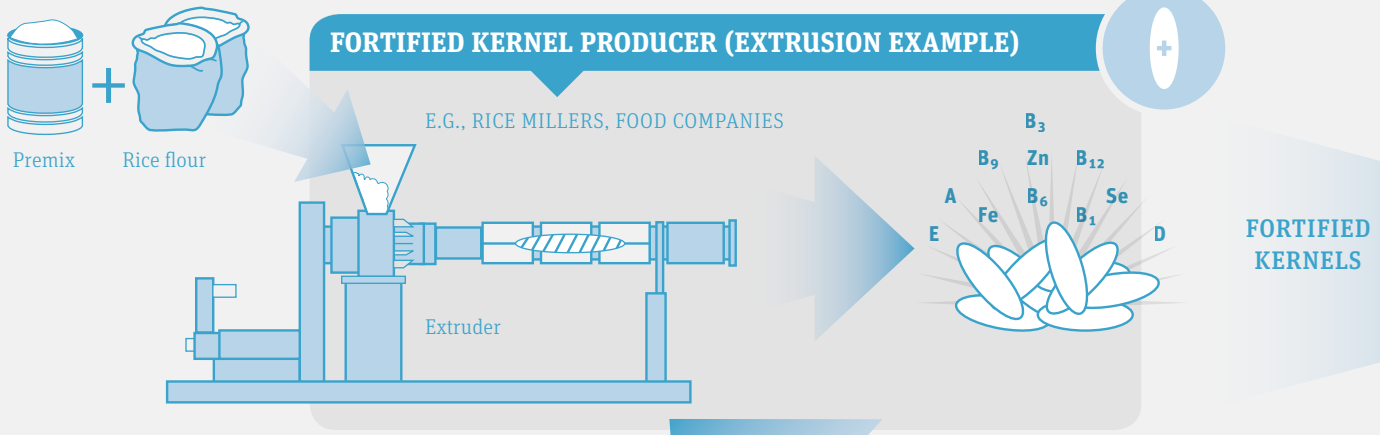
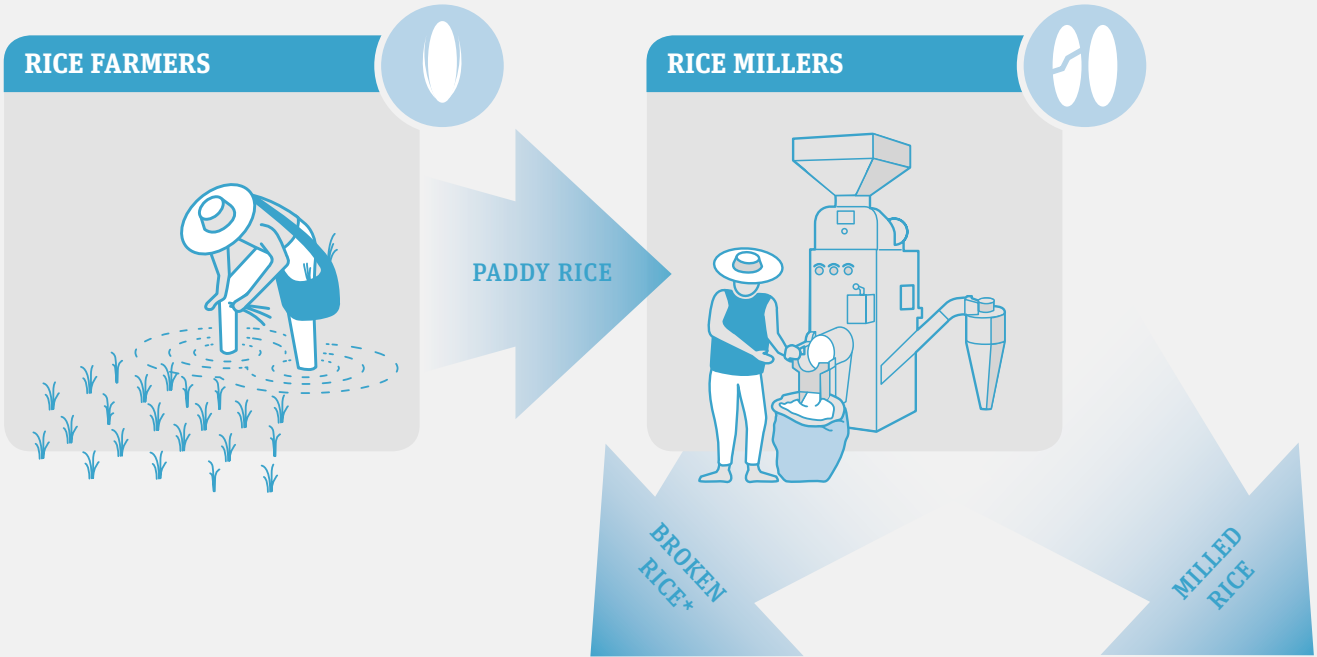
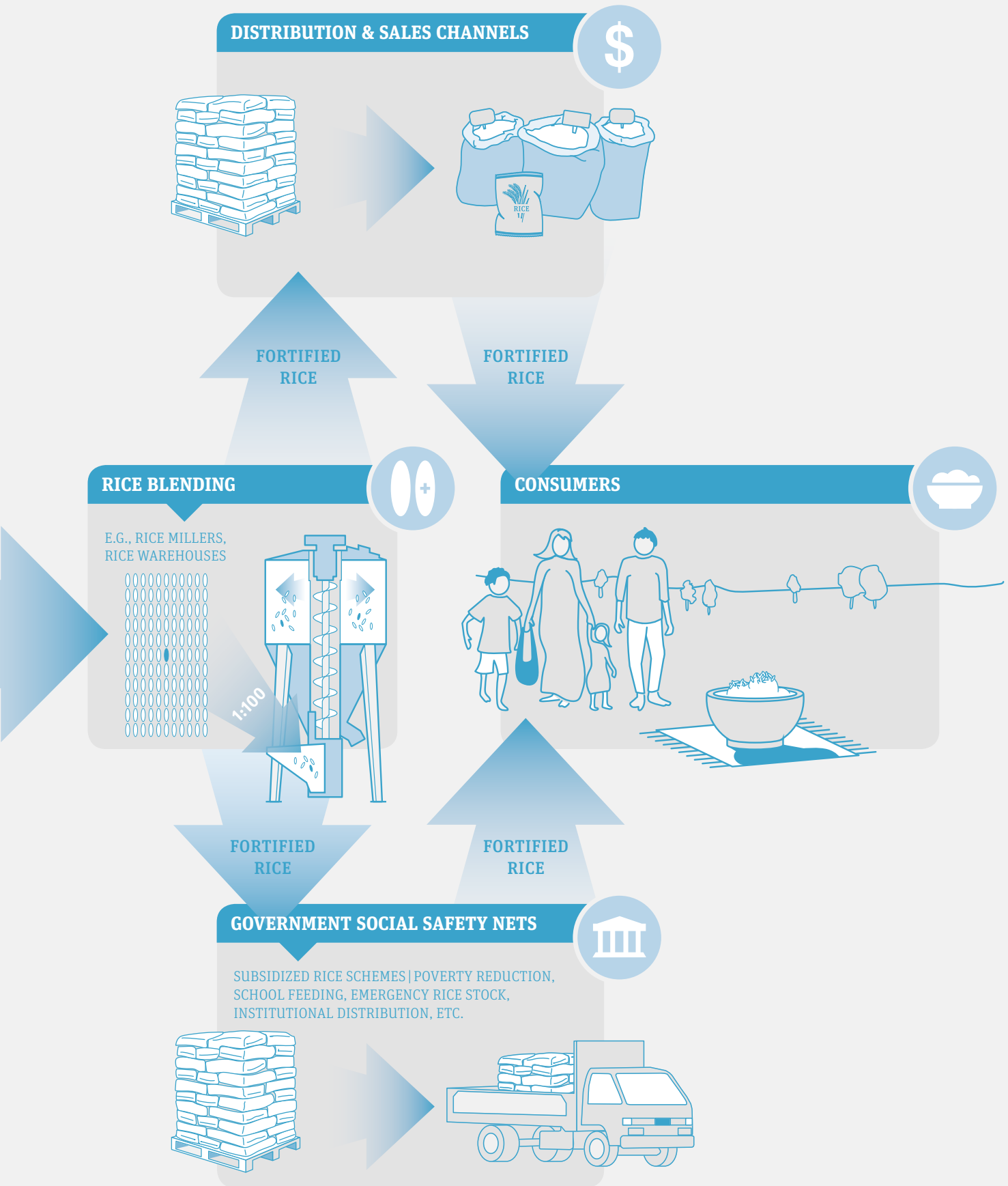


FORTIFIED RICE SUPPLY CHAIN



* For extrusion technology broken rice can be used to produce fortified kernels; with coating technology, head rice is required.



TERMINOLOGY **Paddy rice:** Rice kernels still enclosed in an inedible, protective hull (rough rice) **Head rice:** Unbroken grains of milled rice with the hull, bran and germ removed **Milled rice:** Polished rice is the regular-milled white rice. Hull, bran layer and germ have been removed **Blending:** Mixing milled, non-fortified rice with fortified kernels in ratios between 0.5–2% to produce fortified rice **Fortificant mix:** Blend that contains several selected micronutrients (also referred to as premix) **Fortified kernels:** Fortified rice-shaped kernels containing the fortificant mix (extrusion) or whole rice kernels coated with a fortificant mix (coating).